



PUBLIC HEALTH

**ALWAYS WORKING FOR A SAFER AND
HEALTHIER WASHINGTON**

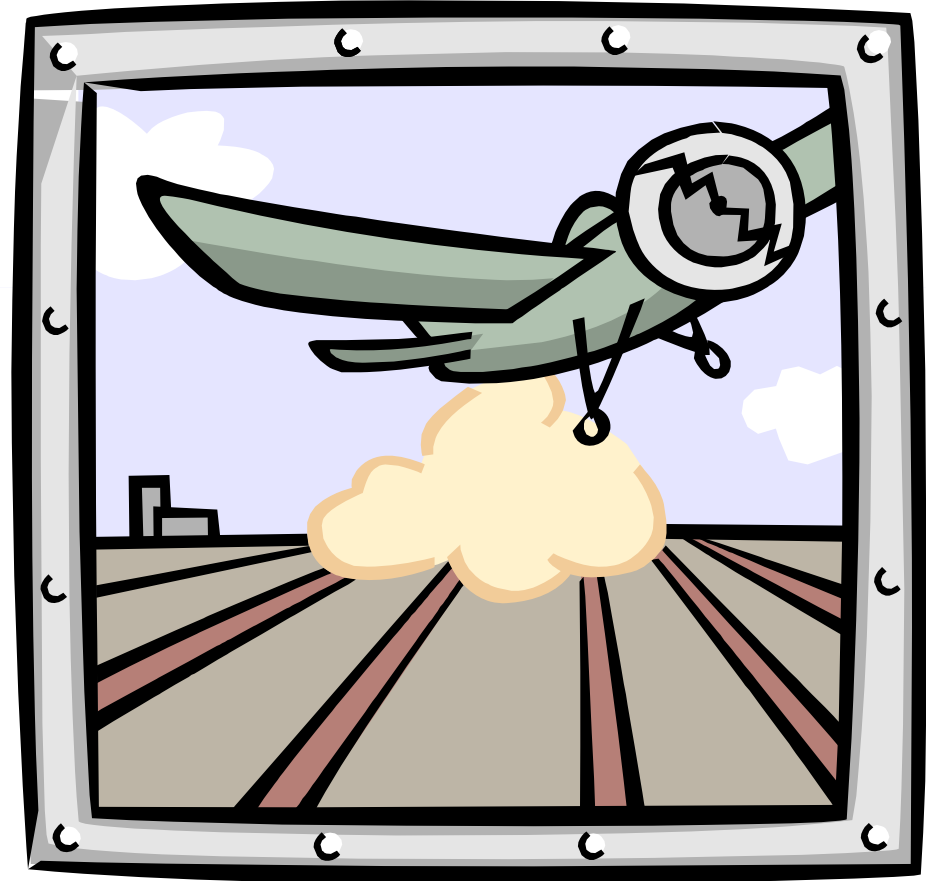
EPA / CDC Region 9 / 10 EXERCISE
Washington State Log
August, 2010

National Environmental Monitoring Conference, August 18, 2011



Always accept a chance to exercise!

- Joined the Clinical Exercise (CDC)
- Joined the Environmental Exercise (EPA)



PUBLIC HEALTH
ALWAYS WORKING FOR A SAFER AND
HEALTHIER WASHINGTON



CDC elects WA as the lead clinical laboratory

- WAPHL gets to know the script (MSEL)
- WAPHL gets its own CDC Observer



PUBLIC HEALTH
ALWAYS WORKING FOR A SAFER AND
HEALTHIER WASHINGTON



Theoretical Exercise



PUBLIC HEALTH
ALWAYS WORKING FOR A SAFER AND
HEALTHIER WASHINGTON

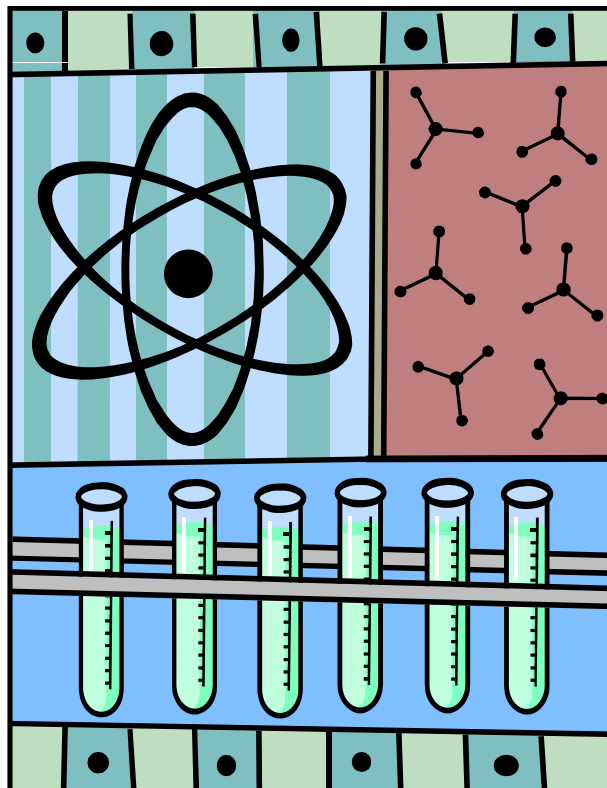


Actual Exercise



PUBLIC HEALTH
ALWAYS WORKING FOR A SAFER AND
HEALTHIER WASHINGTON

Analytes-tools and talent



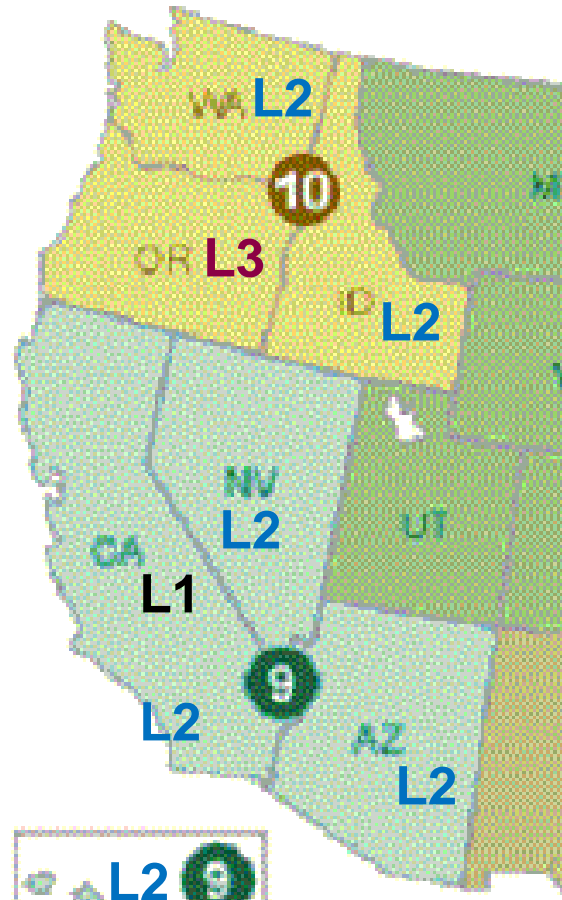
Level 2 Labs:

- Arsenic in urine for Lewisite analog—send high As specimens to Level 1s;
- Arsenic or Xylene in water for ERLN;

Level 1 Labs:

- Chlorovinyl Arsenic Acid (CVAA) as confirmation of Level 2s.

Players



- Guam
- Trust Territories
- American Samoa
- Northern Mariana Islands





Ready, Set, Leave town!



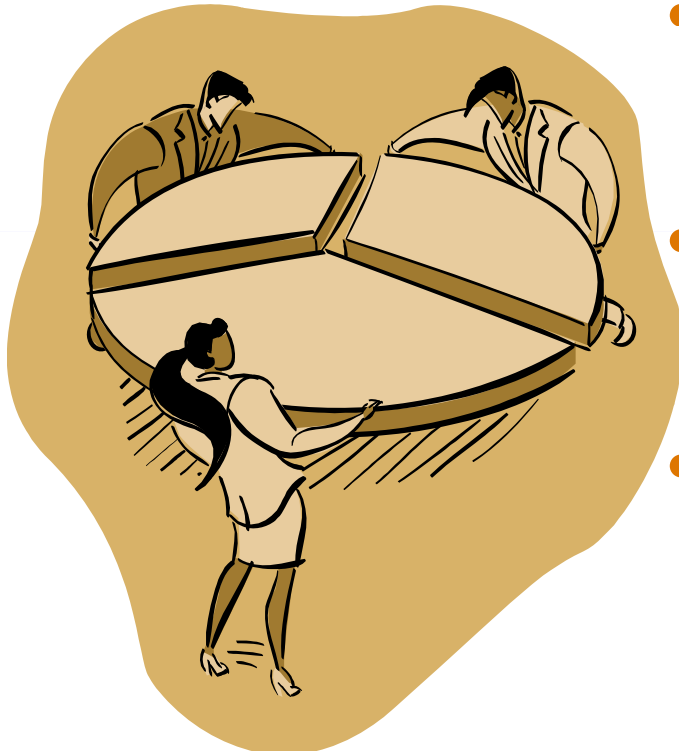
PUBLIC HEALTH
ALWAYS WORKING FOR A SAFER AND
HEALTHIER WASHINGTON

Arsenic Trigger Level – in trouble already



50 ppb

Teamwork



- 100 specimens are prepositioned at each lab
- Oregon splits to the other three L2s in Region 10
- Script: California has “breakdown” on Day 3 and specimens divert to Virginia



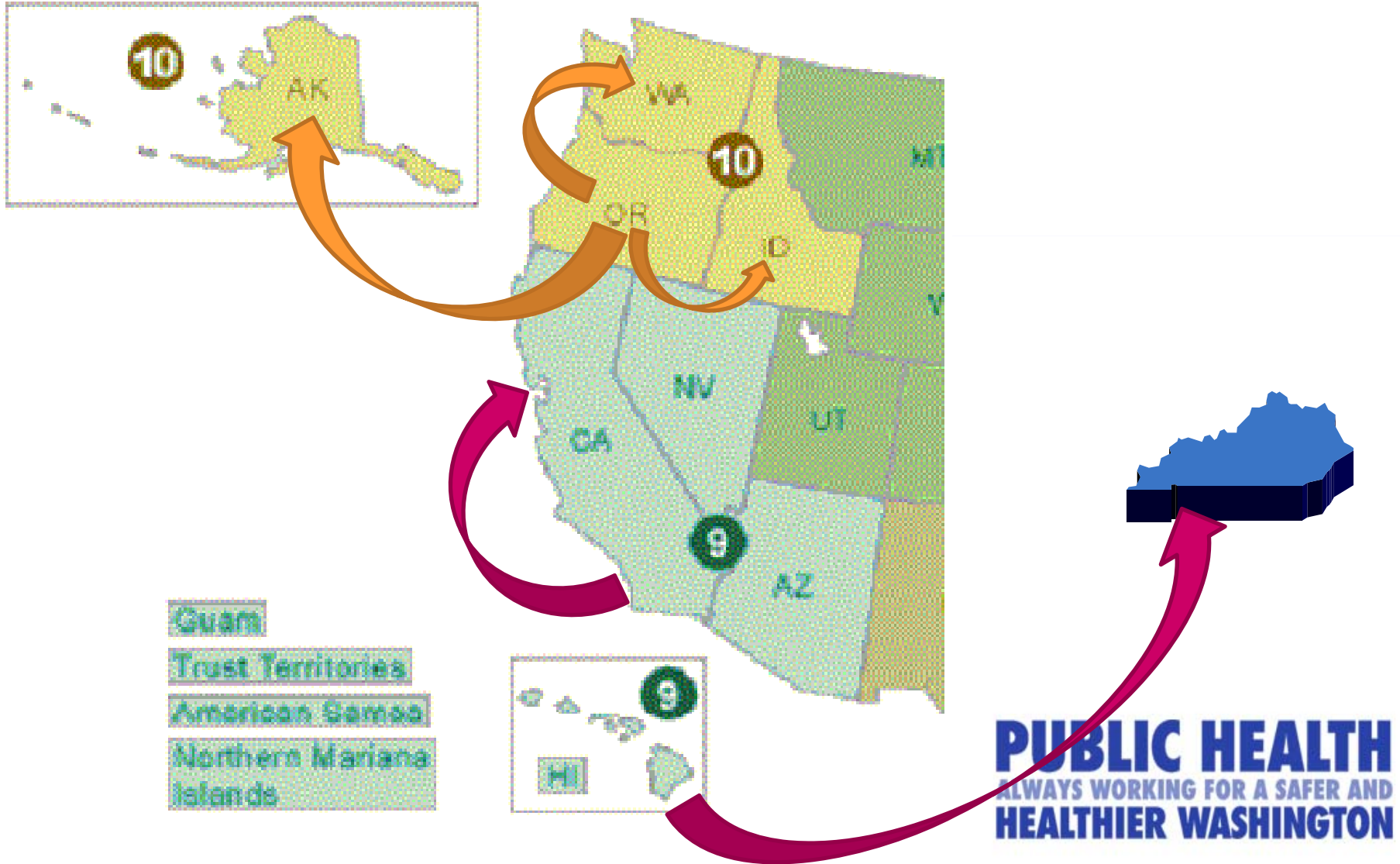
Washington State Department of
Health

All of a sudden...

- Actual events take over
 - Hawaii and Los Angeles suffer instrument failure;
 - California ad libs full instrument capabilities;
 - All the other labs in the exercise volunteer to take specimens from HI and Los Angeles;
 - CDC and the labs redirect samples, LA to CA and HI to Virginia (HI to VA is 2 days by overnight).

PUBLIC HEALTH
ALWAYS WORKING FOR A SAFER AND
HEALTHIER WASHINGTON

Clinical Sample Shipments





Data Management

To CDC:

LRN Results
Messenger system

To EPA:

WebEDR system

Between Labs:

Encrypted
spreadsheets

Oregon:

Has its own secure
web-based data
submission



PUBLIC HEALTH
ALWAYS WORKING FOR A SAFER AND
HEALTHIER WASHINGTON



Challenges met well

- Laboratories communicated well on the technical level;
- Labs hit the curve balls out of the park;
- CDC / EPA communications with labs was effective and efficient;
- Alert and online status were achieved quickly with a few well-coordinated steps.

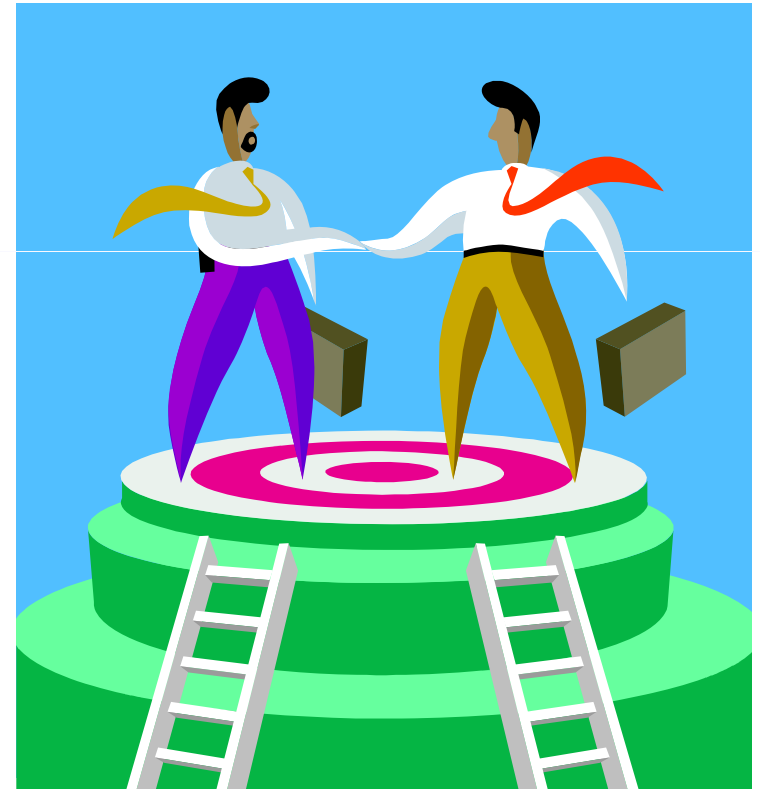


Challenges requiring effort

- Material participants were notional:
 - The exercise started in Husky Stadium, but left out the emergency response team at UW.
 - The Water Laboratory Alliance left out the DOH Office of Drinking Water.
- Systems for reporting of results are not fully synchronized.
- Documentation of telephone calls, requests, orders, and significant conversations was overwhelmed. Emails are their own records.
- Some confusion when events take the exercise off-script. WAPHL, as a player, went with the improv.

Bottom Line

- We can depend on our team.
- Communications are improving all the time.
- Sharing results still needs a little work.





PUBLIC HEALTH
ALWAYS WORKING FOR A SAFER AND
HEALTHIER WASHINGTON

THANK YOU

Blaine Rhodes
blaine.rhodes@doh.wa.gov