

An aerial photograph of a densely packed informal settlement, likely a favela, built on a steep hillside. The buildings are closely packed, multi-story, and constructed from various materials, including brick and corrugated metal. The settlement extends to the edge of a steep drop-off. In the background, a mountain range is visible under a cloudy sky. The overall tone is somber and urgent.

All Hands on Deck: How Scientists and Communities Can Cooperate to Solve Urgent Environmental Challenges

And Why We Have To



Unprecedented Impact





and Robert R. Twilley

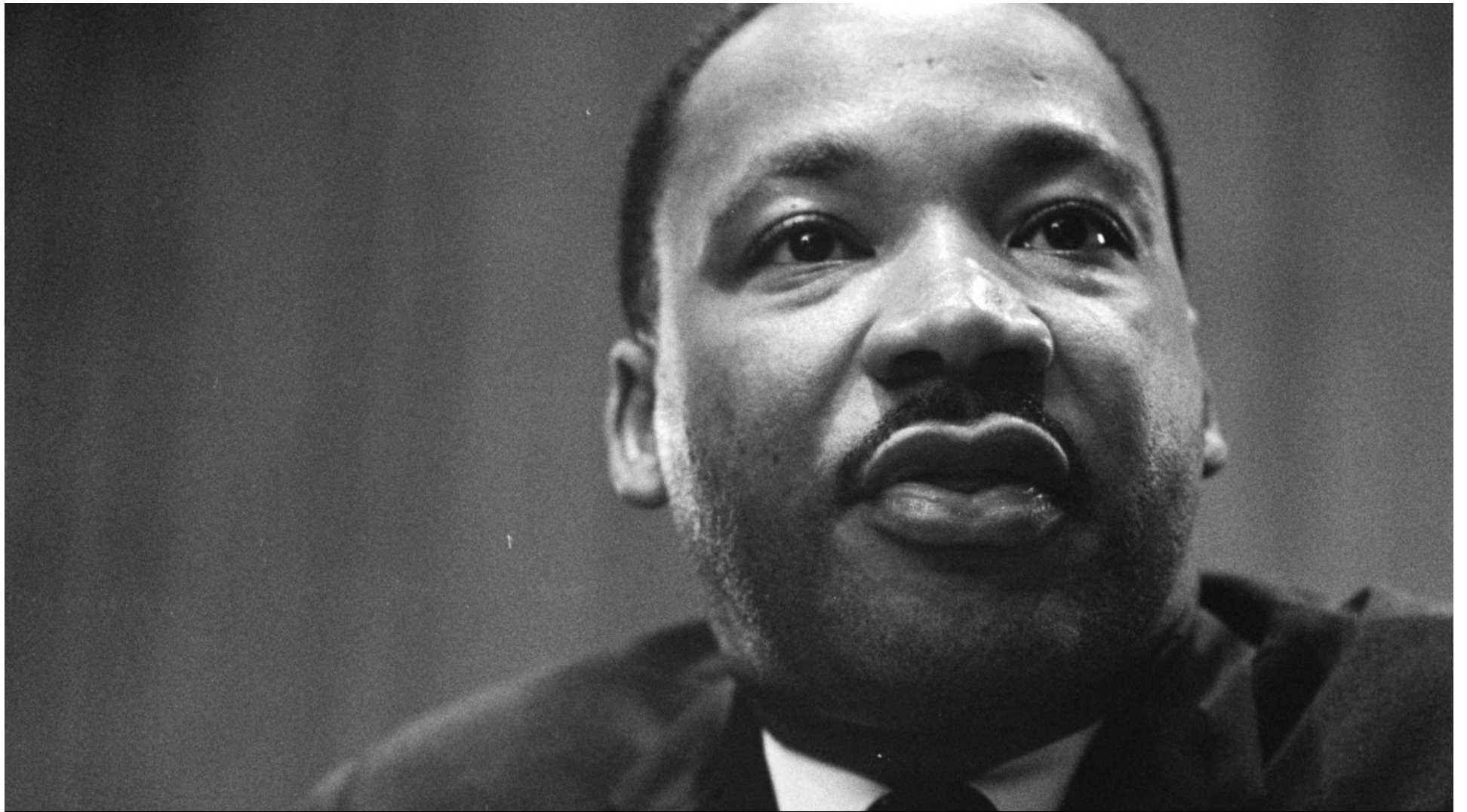
Unprecedented Vulnerability



Victor H. Riv



Unprecedented Inequity



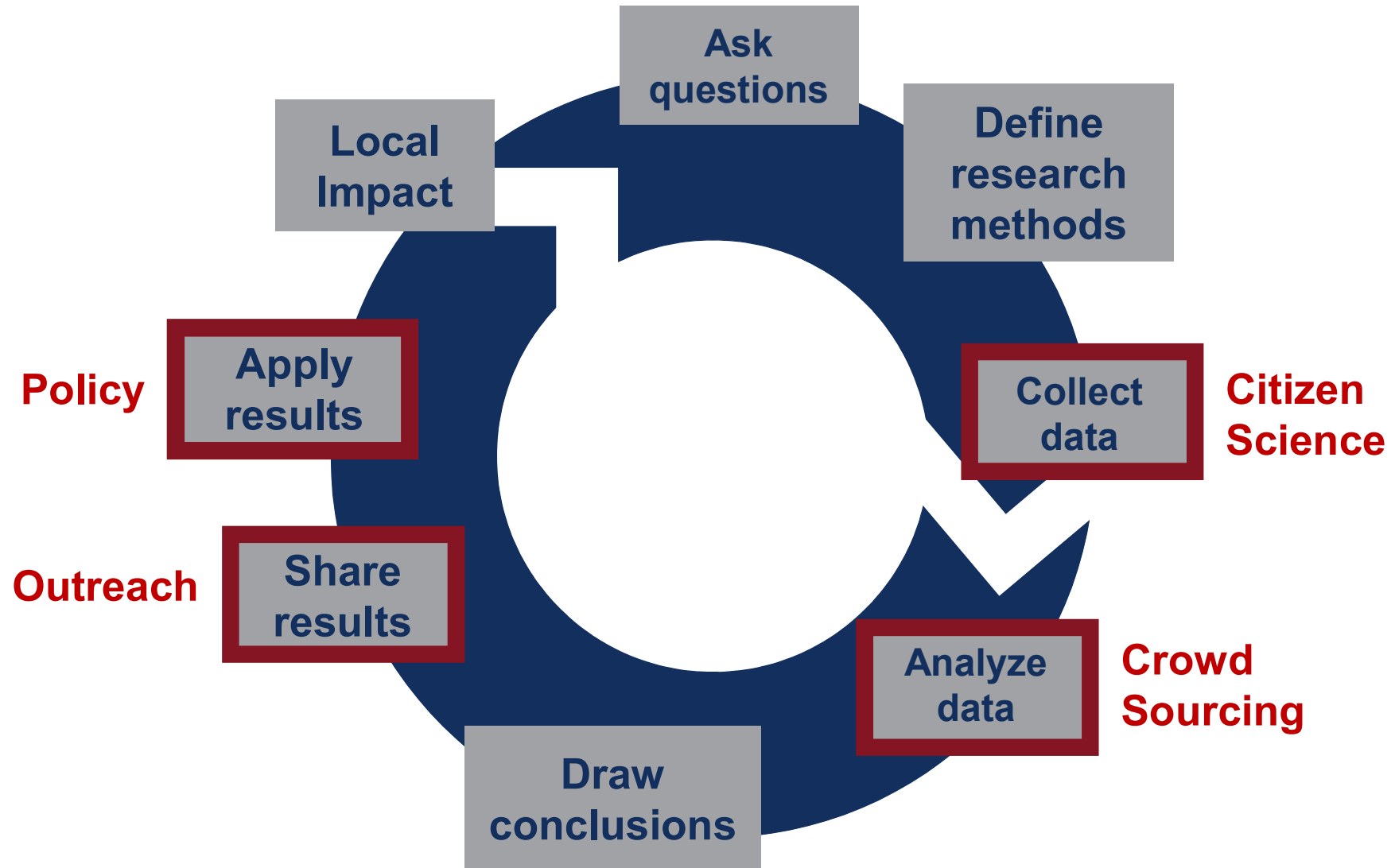
Our scientific power has outrun our spiritual power. We have guided missiles and misguided men.



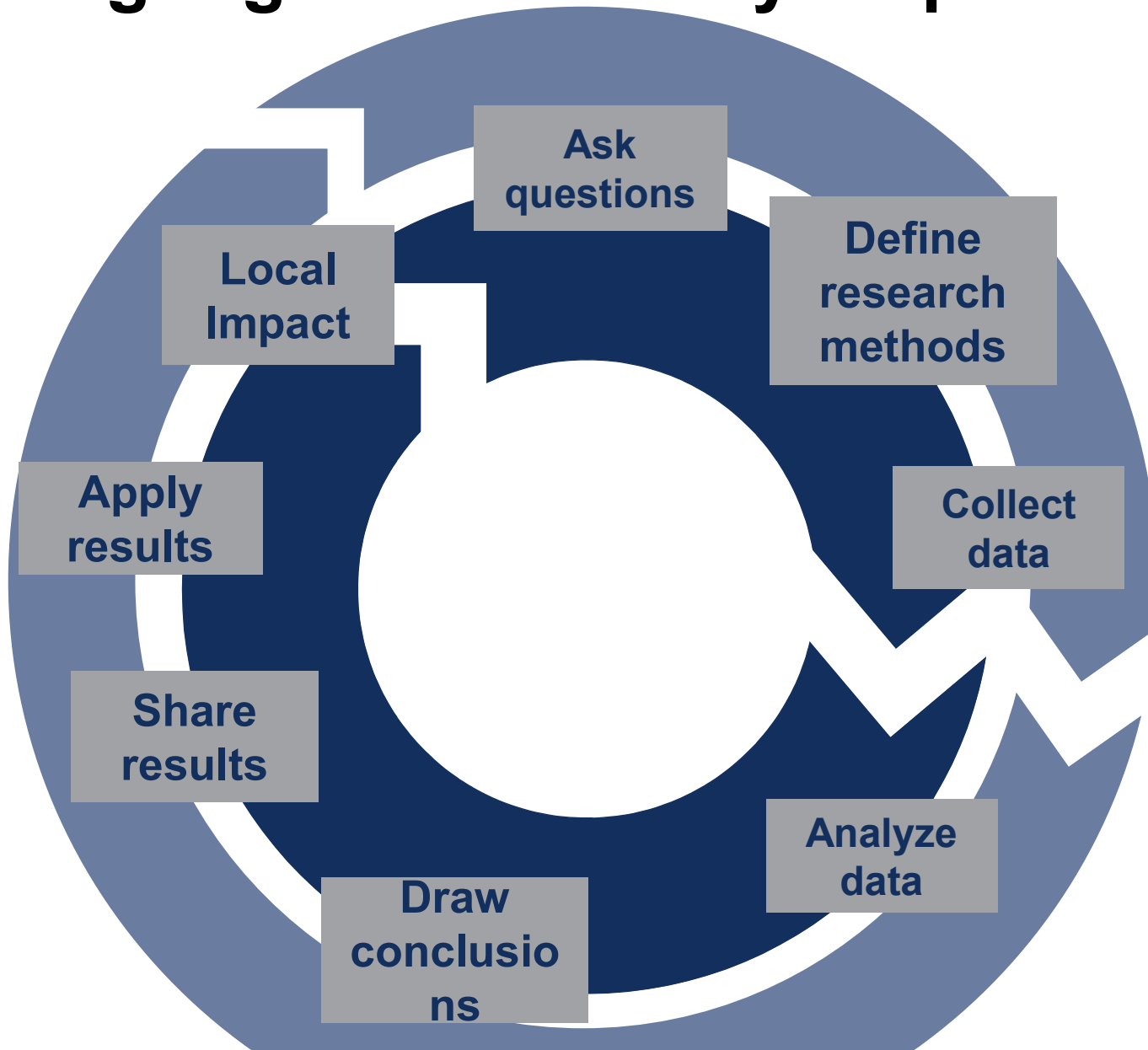
A flow of new scientific knowledge...



We often work with communities on parts of science

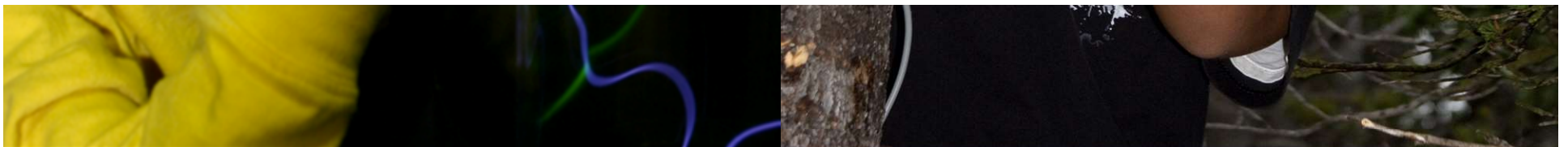


Working together on every step



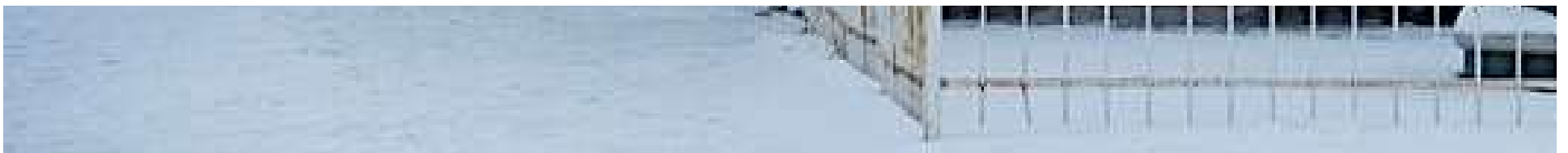


Unprecedented Opportunity



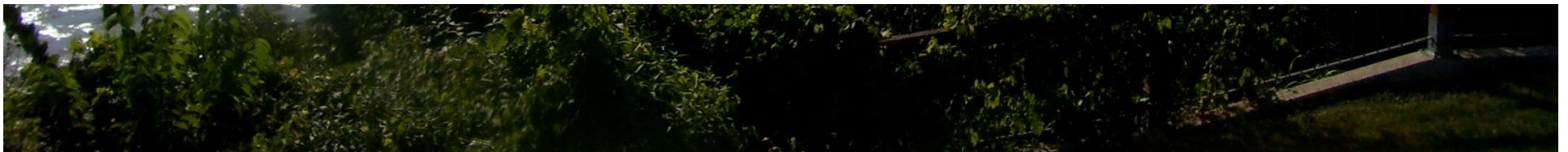


1. Design research for action





and agree to base action on evidence





2. Manage data together

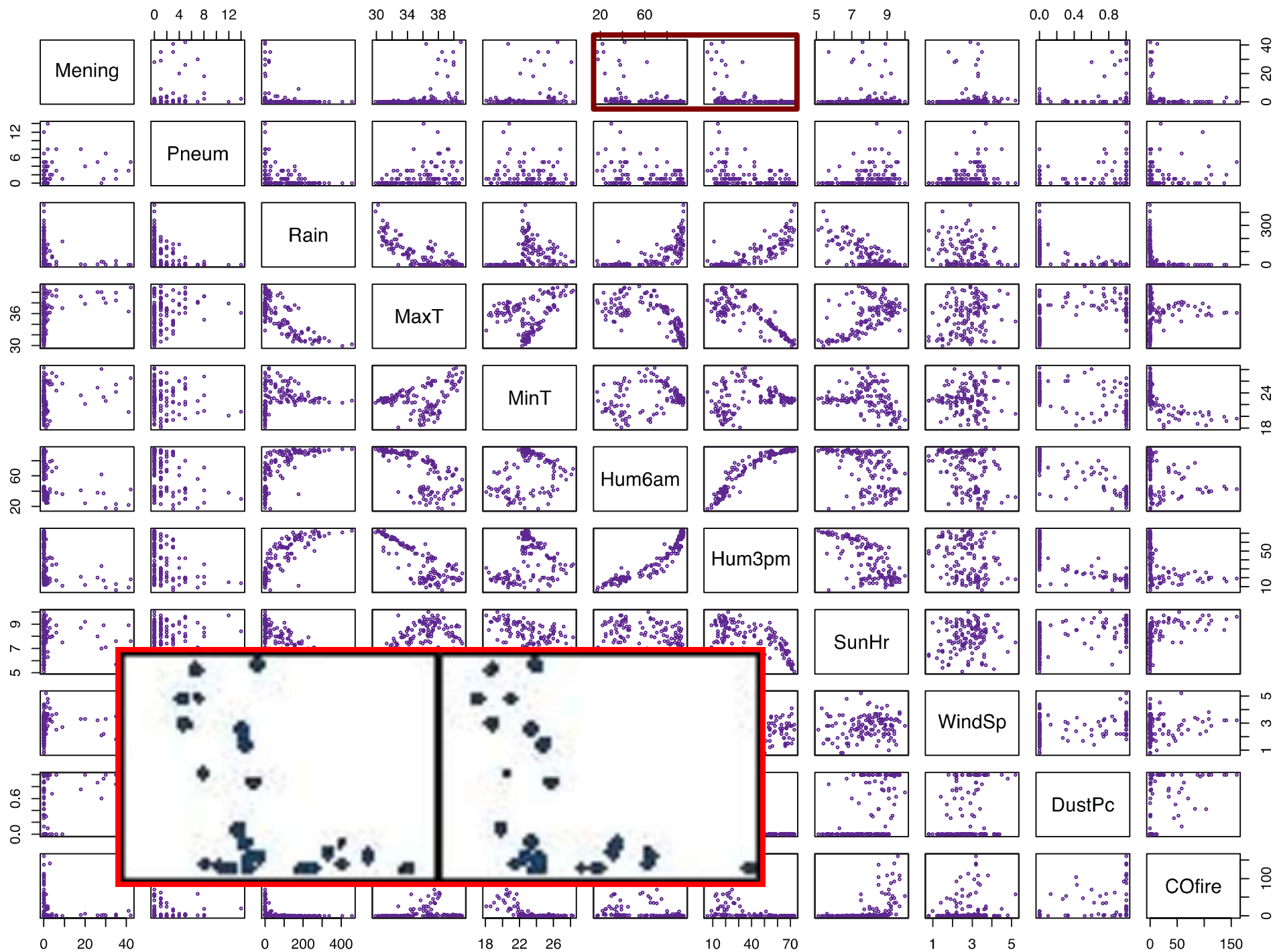




3. Respect local knowledge







Africa Decision Information System (ADIS) for Meningitis

2012 03 19 (week/semaine 12)

Base Layer
☐ OpenLayers WMS
Overlays
☒ District Surveillance
☒ Areal Coverage Forecast

Dono Manga, Tandjile, Tchad

LVL ID : TDH018004000000000000
Area / Superficie : unknown
Population / Population : 10762.0

Status / Surveillance :

Cases / Cas : 11
(0,0,0,0,0,4,3,7,8,3,6,11,5)

Attack Rate / Taux d'Attaque : 10.2
(0,0,0,0,0,0,0,0,0,0,3,7,2,8,6,5,7,4,2,8,5,6,10,2,4,6)

Deaths / Décès : 0
(0,0,0,0,0,0,0,0,1,0,1,0,0)

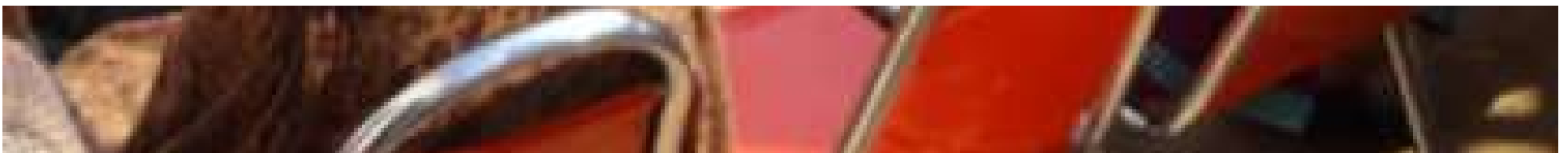
Mortality / Létalité : 0.0
(null,null,null,null,null,0,0,0,0,0,0,12,5,0,0,16,7,0,0,0,0)

Data / Données :
[Show Time Series Plot / Voir Graphique Chronologique](#)
[Browse Met Data / Parcourir les Données Météo](#)

20.49219, 3.98535



4. Engage the community's full fabric



Investigating Indoor Air Quality in Northeast Denver

By Ashley M. Collier, George Ware, PG Iwasaki, LaShonn Billingsley, Debbi Main, Raj Pandya, and Brian Fauver

Backed by Ricardo Piedrahita, Bo Sprotte Kofod, Natasha Udu-gama, Wythe Marschall, Sue Przekwas, Billy Williams, Gavin Edwards, Mary McAfee Sealing, Berkeley Almand-Hunter, Denny Luan, Doug Peterson, Evan, George Ware, Katherine Fedde, Vidyut Pandya, and 9 other backers >



\$2,951

Pledged

70% \$4,250
Funded Goal

9
Days Left

Back This Project

5. Budget based on values



University of Colorado Boulder, Taking Neighborhood Health to Heart, AGU TEX, Colorado State

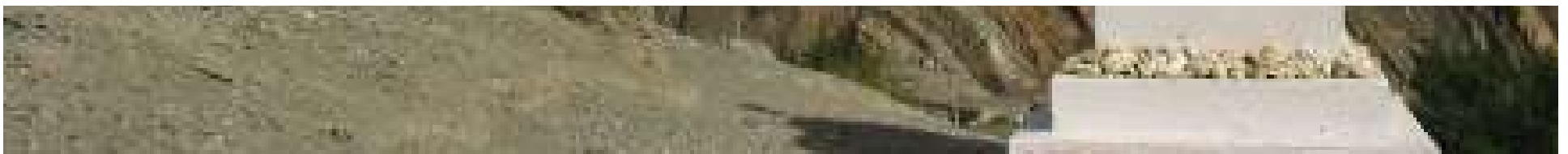
Engineering

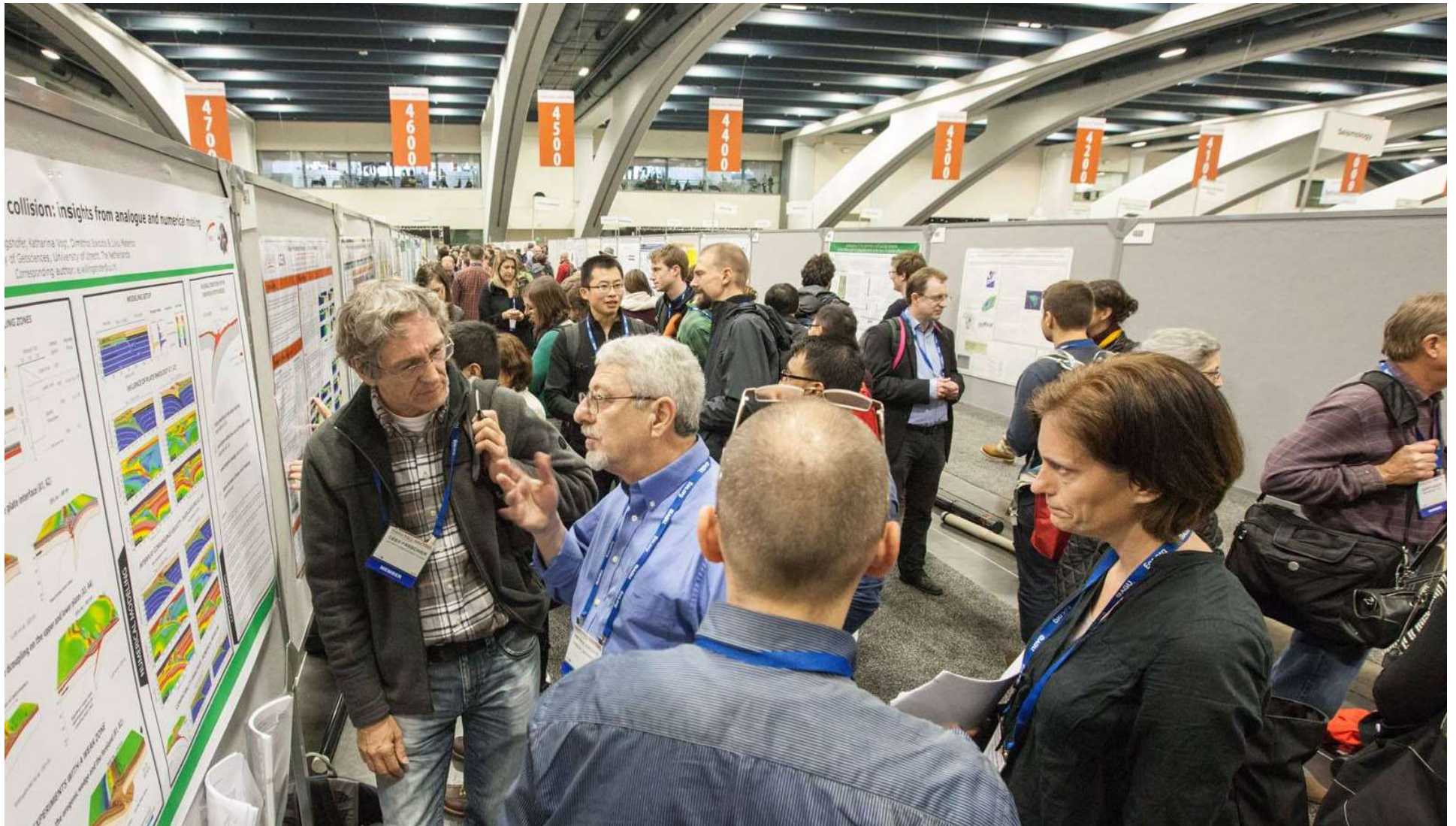
Earth Science

Open Access

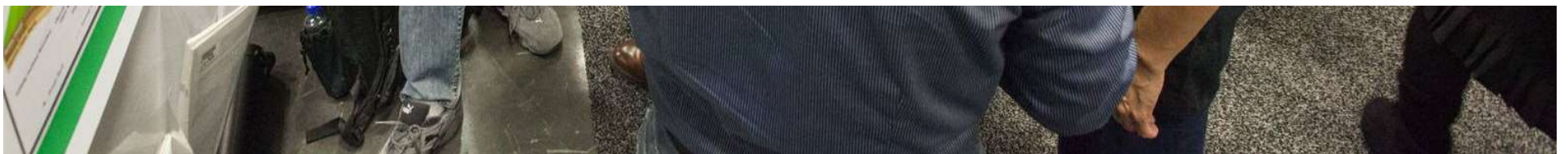


6. Draw from your scientific skills





and your professional networks





7. Start small





8. Build Together



Some Mantras

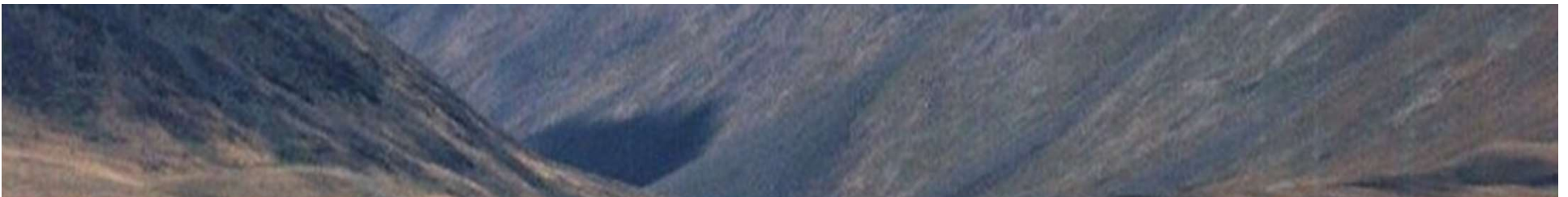
- Relationships, not transactions
- Share values and aspirations, not just information
- Science is necessary but not sufficient
- Knowledge speaks, wisdom listens
- Work builds trust



THRIVING EARTH EXCHANGE

Powered by AGU

**Communities and Scientists working
together to create local solutions**



Designing a Weather-ready City Hall

Midway, GA



Rain Water Cisterns



Green Roof



Rain Garden



Mold Resistant
flooring



Bio swales



Grass pavers

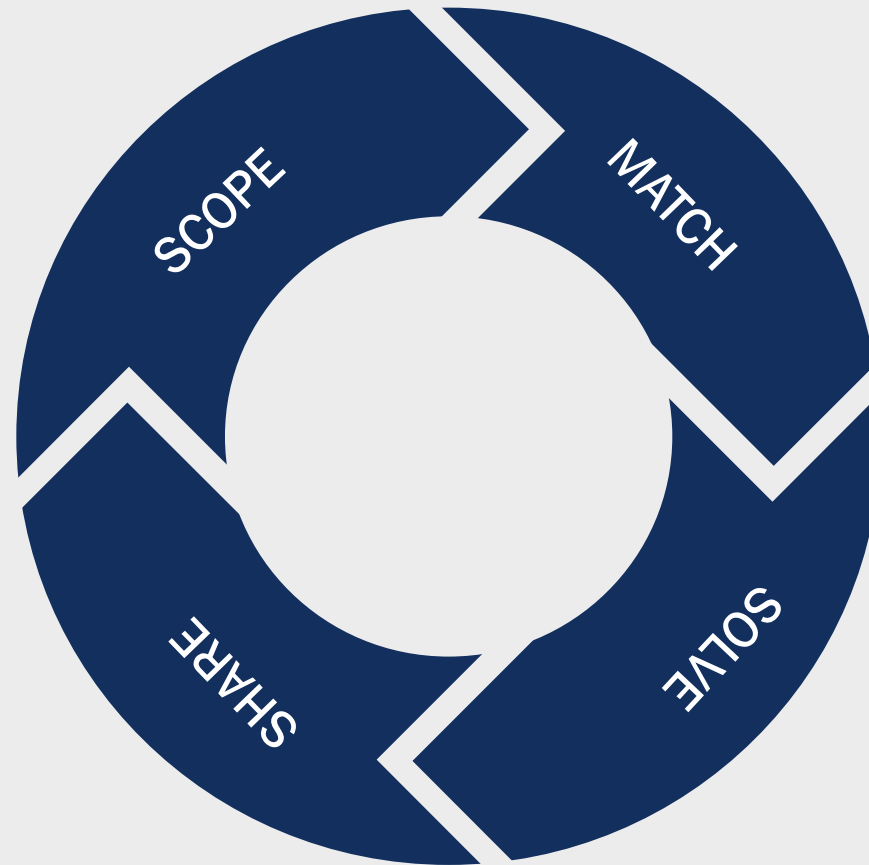


Setting Ambitious Green House Gas Targets

Eugene, OR

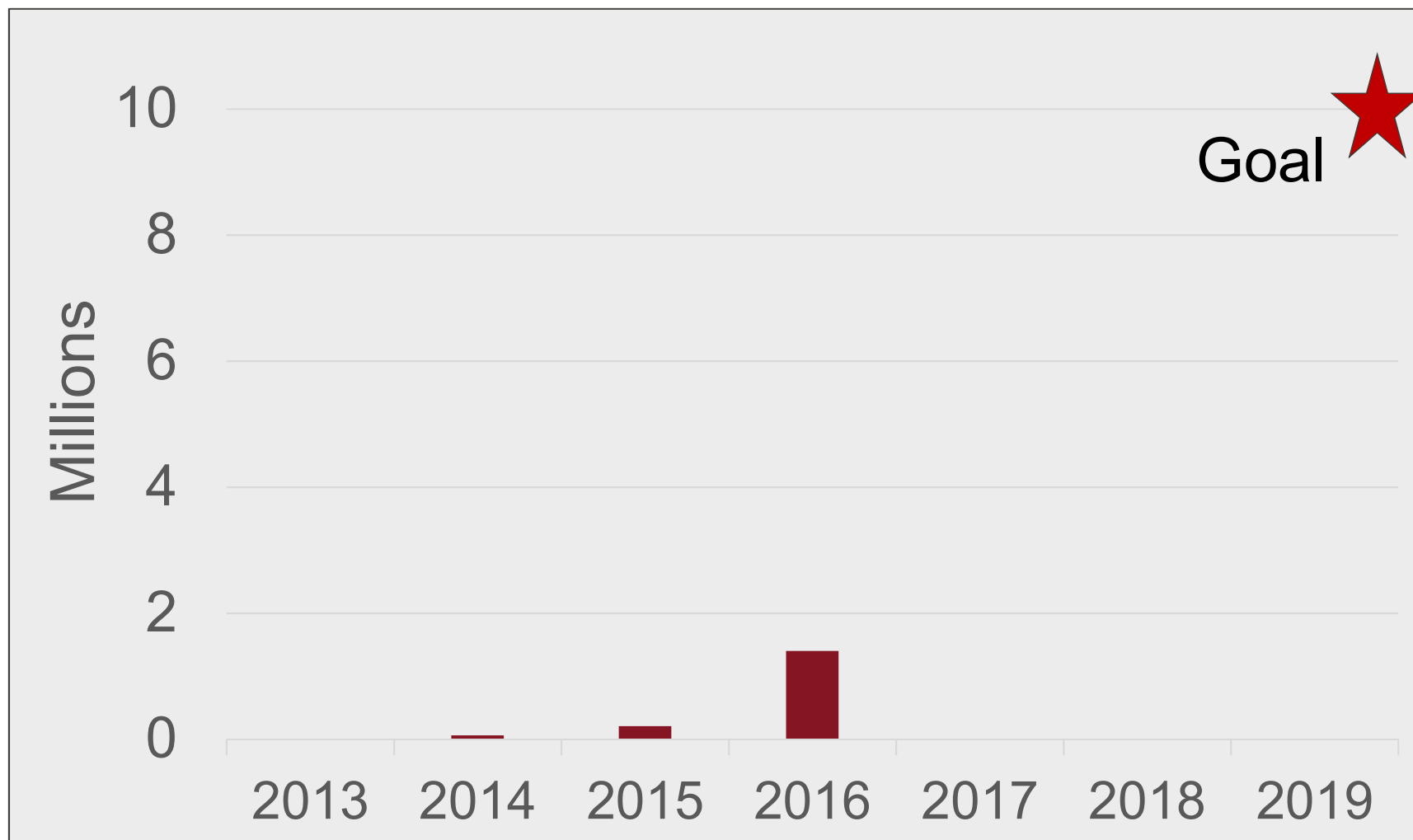


Four Modules to Impact

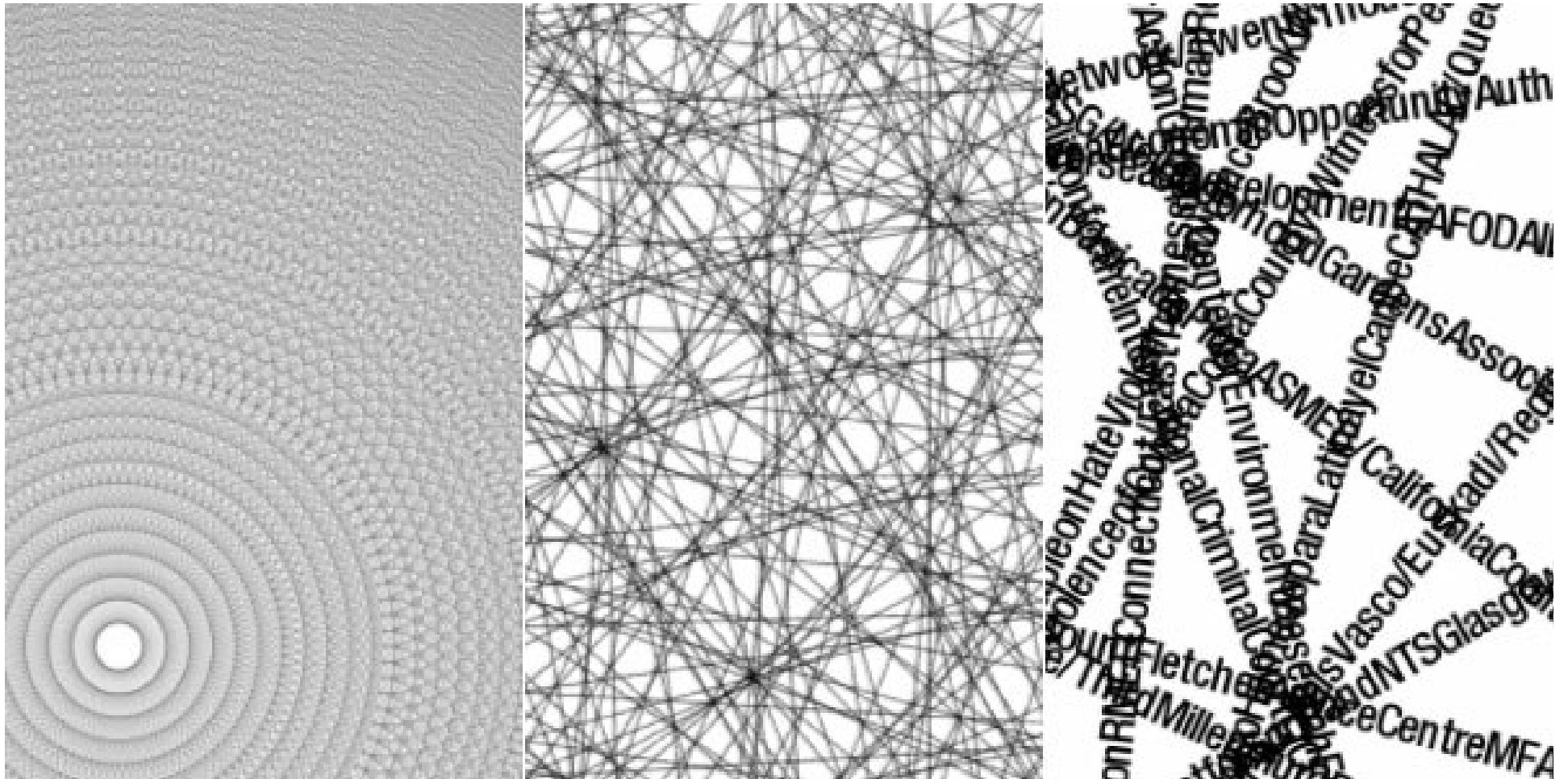




People Impacted by TEX







E Pluribus Unum, by Chris Jordan

**Cold is what makes
my language,
my culture,
my identity.**

**What am I going to do
without cold?**

-- Oscar Kawagley, Yup'ik



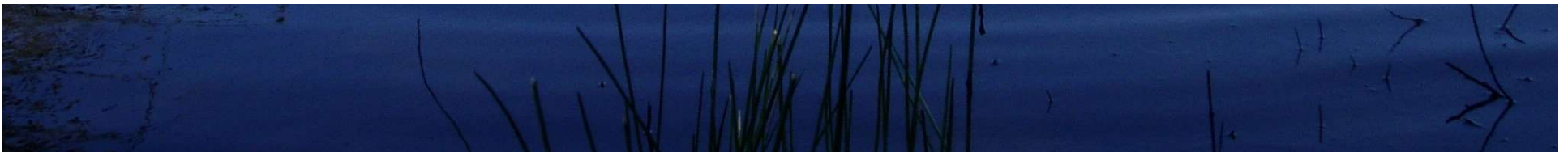


Last mile





Community Based





**THRIVING EARTH
EXCHANGE**

Powered by AGU

Networks

